

SANCTUARY[®] HOME

Homes Should Be Sanctuaries

Bringing more peace, quiet and comfort to a house—while improving the health and well-being of those who call it home. Your home should feel like a haven. A safe space for you and your family to just be. And now it can.

Our SANCTUARY[®] Homes are constructed to reduce the power of sound in the house by up to 60%¹ and regulate temperatures from room-to-room and floor-to-floor.² With SANCTUARY, comes improved sleep, reduced anxiety and greater well-being. Imagine what that would mean to you and your family.

\$3.9B

could be
saved by
lowering noise

An estimated \$3.9B each year could be saved in the U.S. in treating cardiovascular diseases by lowering environmental noise by 5 decibels.³

NOISE EXPOSURE CAUSES⁴

HYPERTENSION CASES

14%

HIGH CHOLESTEROL CASES

9%

A Home That Restores Well-Being



BETTER SLEEP

Insufficient sleep has been linked with obesity, diabetes, heart disease and other health issues. Luckily, with a Sanctuary[®] Home you can reduce the power of sound transfer between walls by 60%,¹ improving sleep, and general positivity.



MORE COMFORT

When the temperature inside your home is equalized,² your body doesn't need to adjust as you move from one room to the next. This means your body will more easily reach, and maintain, a relaxed state. And, therefore, so will you.



PEACE OF MIND

Sanctuary[®] Homes provide a 1-hour firewall,⁵ making it the best choice to protect the people you love. Plus, these homes are built with insulation that is made with 85% recycled content. Saving lives and the planet—two things that should allow you to breathe easier about your home.

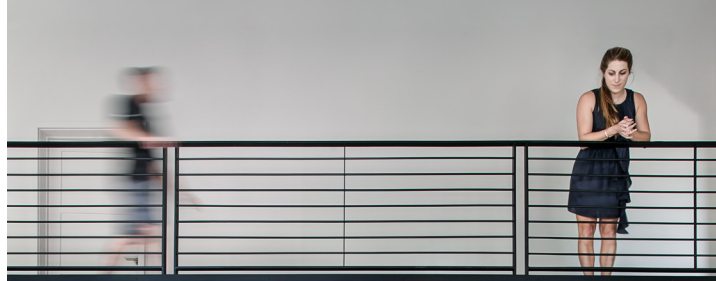


SUSTAINABLE

Each SANCTUARY[®] Home locks up 1.34 tons of carbon which is equivalent to planting 3,600 trees. SANCTUARY[®] Insulation is made with 85% post-consumer paper and uses low-energy manufacturing and short-haul transportation, resulting in the least embodied carbon of any major insulation.⁶

*green*fiber[®]

quiet | comfort | protected | sustainable



Built-In Wellness

SANCTUARY® by Greenfiber Insulation that is engineered to fill the tiny joints and gaps hidden within walls, floors and ceilings, creating a dense, scientifically advanced barrier. It's quieter, warmer, cooler and safer—creating a home that is more comfortable at every level.



60% Reduction in Sound Power¹

Reduced noise from the outside



High Efficiency

Lower heating and cooling costs



1-Hour Firewall⁴

More time to escape



Equalized Temperatures²

Elimination of "hot spots" leads to improved comfort from room to room and across multiple floors



Reduces Carbon Emissions⁵

Made with 85% recycled content with the lowest embodied carbon of any major insulation product



SANCTUARY® HOME

Learn About Building a SANCTUARY® Home

With SANCTUARY insulation, you'll have much more to offer today's homebuyers than traditional means of differentiating quality. To have the wellness-branded advantage of a SANCTUARY Home visit www.greenfiber.com/sanctuary or call 800.228.0024.

LEARN MORE TODAY

greenfiber.com/sanctuary ■ 800-228-0024

GREENFIBER ASSUMES RESPONSIBILITY FOR ALL CLAIMS MADE IN REGARDS TO THE PRODUCT'S PERFORMANCE IN THE HOME.

1) In field testing on identical 2x4 exterior wall types, Greenfiber® R-13 Stabilized Spray-Applied Insulation outperforms R-15 unfaced fiberglass batts by 4 NIC rating points (~60% reduction in sound power). The weak point in the assembly such as flanking through windows and doors will diminish the value of the reduction in sound power. Reduction in sound power is achieved through retrofitting, dense-packing or spray applying Greenfiber into walls (contractor installation is recommended for these applications). See manufacturer's installation guide for full details on how to install to meet specifications. 2) When spray-applied dense-packed in all exterior walls. 3) American Journal of Industrial Medicine in 2018—Centers for Disease Control and Prevention's National Institute for Occupational Safety and Health (NIOSH). 4) Greenfiber® offers a full breadth of fire assemblies. Based on U305 assembly. 5) Manufacturer EPDs listed in E3 building transparency catalog. 6) Based on the CIMA/CIMAC LCA for manufacturing and WWF Biogenic Carbon Footprint Calculator for Harvested Wood Products. Tree sequestration statistics are based on the EPA Greenhouse Gas Equivalencies calculator @ www.epa.gov/energy/greenhouse-gas-equivalencies-calculator.

greenfiber®
creators of **SANCTUARY®**